

## YF-833 Kloud Signage Player



YF-833 Kloud Signage Player ARM-Base Digital Signage Player

Rating: Not Rated Yet

**Price**

Price with discount

Salesprice with discount

Sales price

Discount

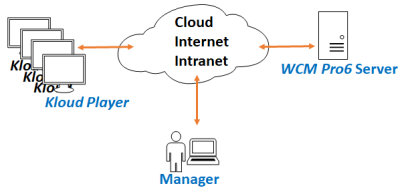
Tax amount

[Ask a question about this product](#)

Description

## YF-833 Kloud Signage Quad-core ARM-Base Player





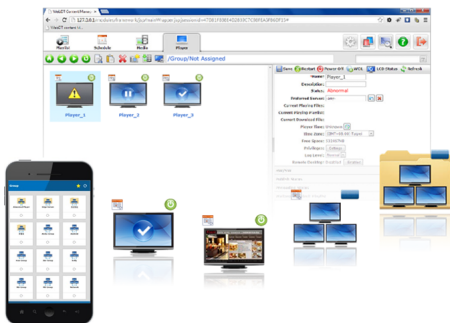
YF-833 Kloud Signage Quad-core ARM-Base Player is part of Kaser's Kloud Signage Solution. The device works as a Digital Signage playback device controlled and managed by WCM Pro6 Server from the Internet or Cloud. The Kloud Signage Android Player comes standard with a built-in agent and is fully automatized by playing back multimedia contents based on the playlist or sequence of playlists scheduled by WCM Pro6 server.

### Features:

- Cost-effective ARM-based Hardware Architecture
- Supports up to FullHD 1080P Display
- WebDT Player Built-in with Subscription-Base Licensing Mechanism
- Both Player Software and Content are Launched and Synced upon Boot
- Each Player's Display Can be Monitored and Controlled by Manager with Browser from Anywhere at Anytime

### Kloud Signage Players Managed by WCM Pro6 Server:

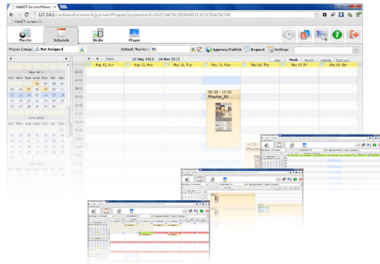
#### Player Group Management



#### Playback Content Preview (Available Only for Intel x86 Windows-Base Devices)



## Scheduling for Players



## Hardware Specifications:

**Model** YF-833  
**CPU** ARM Qua  
d-Core  
**Graphic** PMali400M  
**rocessor** P2  
**Video** Up to  
**Playback** 1080P  
**Display** HDMI  
**Display R** 720P  
**esolution**  
**RAM** 1GB  
**Storage** 8GB  
**Networkin-** 802.11b  
**g** gn  
- 10/100  
FE  
**Bluetooth** 4.1  
**I/O** USB 2.0  
x 2  
**OS** Android  
4.4  
**WebDT** Built-in  
**Player**  
**Accessori** Remote

es      Control  
         Power  
         Adapter

### **Packaging:**

- YF-833 Kloud Signage Player
- Remote Controller
- Power Adapter
- User's Guide
- Communication Camera (Optional)

### **Reviews**

There are yet no reviews for this product.