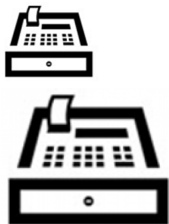


ePOS



Kloud POS A Cloud Solution for Point of Sales Terminal

Rating: Not Rated Yet

Price

Price with discount

Salesprice with discount

Sales price

Discount

Tax amount

[Ask a question about this product](#)

Description



What is KloudPOS?

Kaser's KloudPOS is a Point of Sales solution based on ARM hardware architecture and Android OS with the rich support of both POS Apps and POS related peripherals. The YF-842 KloudPOS system compact box comes with a high-performance Octa-Core SoC and a rich set of I/O including USB 2.0 port x 4, Gigabit Ethernet LAN port x 1 and WiFi 802.11bgn, HDMI and VGA Display, and the support of EETI and ELO Touch Interface.

Why KloudPOS?

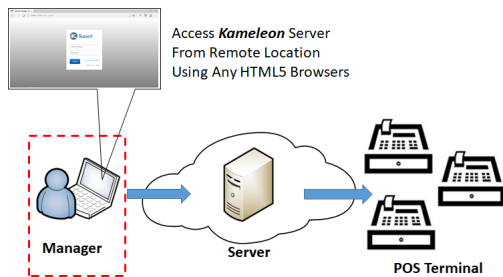
- Cost Effective
- Availability of POS Apps from Both Google Play and Cloud

Features:

- ARM-based Octa-Core Cortex-A7 CPU
- Supports VGA/HDMI Display
- Supports ELO and EETI Touch Drivers
- Connectivities of POS peripherals:
 - Thermal Receipt Printers with Cash Drawer
 - Bar Code Scanners
 - Customer Displays
 - MSRs
- Support a Wide Variety of POS Apps from Google Play and Cloud

Kameleon Remote Management:

- Kameleon is a Cloud-based solution that composes of a Server Backend and a Client software (an agent built-in to KloudPOS).
- All KloudPOS devices are controlled by Kameleon Server based on the Configurations set by Kameleon Manager.
- The Kameleon Manager can use any HTML5 Browser for configuring/managing KloudPOS.



Hardware Specifications:

Model	YF-840
CPU	ARM Octa-Core
Graphic	PowerVR

Processor
Video Up to 2K
Playback
Display HDMI /
VGA
Display 1080P
Resolution
RAM 1GB
DDR3 On-
board
Storage 8GB On-
board, Ext
ernalUSB
& SD Card
Reader for
Expansion
Networkin
g -
802.11bgn
- 10/100/1
000 GE
Bluetooth 4.1
I/O - Mic. &
Earphone
Jack
- USB 2.0
x 4, OTG x
1
- SD / TF x
1, COM x
1
(optional)
OS Android
5.1
Kameleon Client Built-
in
Accessori
es - Power
Adapter
(5V, 3A)
- VESA
Mount Kit
(optional)

Reviews

There are yet no reviews for this product.