



Mambo Cam-Flix

DIGITAL MEDIA PLAYER

USER'S MANUAL

Contents

Precautions.....	1
Characteristics.....	1
Appearance and buttons	2
Basic Operation.....	2
System Menu	3
Listen to Music	3
Video playing	4
Camera.....	4
Voice REC	5
Resources Manager.....	5
Picture Browse.....	6
FM Tuner	6
E-Book.....	6
Mini SD Card.....	6
USB Disk.....	6
Convert and Play Video File.....	6
Troubleshooting	7
Specifications.....	8

Precautions

This manual contains important safe measurements and correct operational information, so please read all the information carefully before you use the device in order to avoid any unexpected accidents.

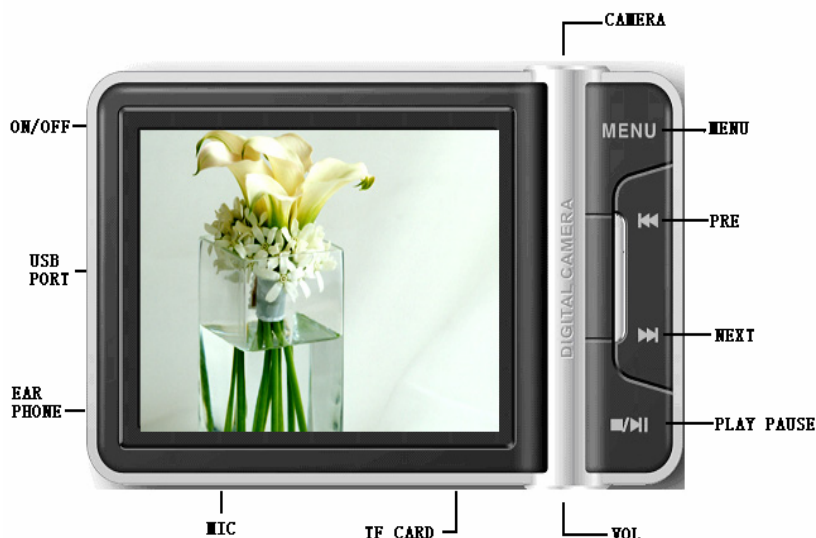
- Do not put the player in the condition of high temperature, humidity or dust.
- Do not put the player in high temperature place (over 40°C), especially not in the cars with window closed in summer.
- Do not knock or hit the player, especially do not shake TFT screen in order to avoid TFT being damaged or displayed abnormally.
- Select suitable volume, turn down or stop use when you feel tingle in ears.
- Battery service life may be various from different using conditions, manufacturer and manufacturing time.
- Do not disconnect the player abruptly during the formatting or uploading and downloading, otherwise, it will cause the program error.
- We will not be responsible for any obligation for any memory loss caused by product damage, repair or other reasons. Please operate correctly as per the manual.
- The player, no matter is powered on or not, once connected with the USB port of started computer, can be charged.
- Do not dismantle the player personally or use alcohol, thinner or benzene to clean the surface of the player.
- Do not use the player in the electronics-prohibited area, such as in the plane.
- Do not use the player when driving or walking in order to avoid traffic accidents.
- Please charge in the following conditions:
 - A. Battery electricity icon displays no electricity.
 - B. Further power on the player when the system is powered off automatically, but it powers off soon.
 - C. No response with the pressing keys.

※Our Company reserves the right for the improvement of the product. It is subject to any change on the specifications and designs without further notice!

Characteristics

2.4-inch 260K full-color TFT display (320X240)
Multi music formats as MP3, WMA and WAV, good timber and real audio frequency display
MPEG-4 video format play, full-screen play display, exterior-sound speaker play
High-definition JPEG picture browse function
Built-in hi-fi 8 Ohm speaker
Microphone record and line-in record
Energy-saving setting, brightness adjustable, customerized power off time
Good timber, support 3D EQ surrounding effect, customerized EQ
Support multi languages
USB2.0 ultra-high speed transmission as 5M/S
Listen to music while reading E-book, with bookmark function
Listen to music while playing games
Portable U-disk function, support Firmware Upgrade
TF card adapter

Appearance and buttons



● **Key description**

1. ON/OFF key: Power on/off key
2. USB interface
3. EAR PHONE: Earphone input jack
4. MINI TF CARD expansion
5. CAMERA key: Camera
6. MENU key: Mode function menu selection and confirmation key
7. PRE key: Previous file menu selection key
8. NEXT key: Next file menu selection key
9. PLAY/PAUSE key: Power on/off key, play/pause key
10. Previous file, menu selection key
11. VOL+ key: Volume/back key

● **Key action definition**

1. The pressing operation includes short press, long press, press and hold, single press.
Unless otherwise specified below, it means short press.
2. Short press: The function works after 1-2s once the key is pressed.
3. Long press: The function works once when the key is pressed and held for 3-5s.
4. Single press: The function works at the time that the key is released after being pressed.
5. Press and hold: The function works many times at certain frequency when the key is pressed till it is released, such as "FF/RW".

Basic Operation

■ Power On/Off

Power On:

Push the power switch to ON position, long press  key for 3 seconds, the player will display the Boot

interface and enter the working mode before the Normal Power Off.

Power Off:

- In Play state: short press **▶** to pause, further press **▶** for 3 seconds to power off.
- In other modes: press **▶** for 3 seconds to power off.
- The system will power off automatically if the battery is not enough.

■ **Power Reset**

If your player is blocked during the using, you can push [ON/OFF] power switch to restart the player.

■ **Connect to Computer and Data File Transmission**

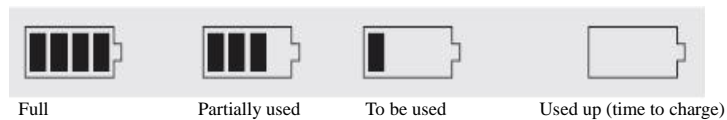
After starting the computer, you can connect the player to computer via USB cable to achieve the USB power supply or USB data transmission. When the player is connected to the computer via USB port, it can be used as a U disk. It requires you only to drag your favorite music or data into MP3 instead of any 3rd procedure.

■ **Volume Control**

you should press VOL switch to volume adjust, then press Leftwards or rightwards.

■ **Battery**

This player adopts built-in lithium batteries of high capacity.



The usable time of battery electricity may be various according to different volume, type of playing file and pressing operation. The player can save battery as per the set [Customized Power Off Time] or [Display Setting].

System Menu

■ **Main Interface**

After entering the Main Interface, select your desired option among [Music]/[Video]/[FM]/[Photo]/[Text]/[Record]/[Navigation]/[Game]/[Setting] circularly by pushing **PRE** or **NEXT**, and short press the "MENU" key to enter the option menu, long press [MENU] key to exit the submenu and return to Main Interface

■ **Setup**

In Main Interface, push **PRE** or **NEXT** to select [Settings] option, short press "MENU" key to enter Setting interface (shown in right bottom), and select the sub-option to be set by pushing **PRE** or **NEXT**.

■ **Display Setup**

- ① Backlight time: six options of 5 sec., 10 sec., 15 sec., 20 sec., 30 sec., and always on.
- ② Lum: five options of +1, +2, +3, +4 and +5, the lower level, the more bright.
- ③ Backlight mode: two options of Normal and Electricity-saving modes.

■ **System Setup**

Three sub-options: Language, about and Upgrade

1. Language Selection: three options of Simplified Chinese, Traditional Chinese, English, Korea, Japanese, Spanish, French, Deutsch, Italian, Portuguese, Russian. etc.
2. About: player storage memory, remain memory and system software version No., these information are read-only, short press "MENU" key to exit.
3. Firmware Upgrading

Eject out the dialog box in this menu, it reminds you whether to upgrade the firmware, it will exit if no firmware upgrading.

Defaulted Set

In this menu, eject out the dialog box, confirm whether to resume the defaulted value, select "Yes" or "No".

■ **Auto Power Off Time**

In this menu, there are six options of Power: Off, 10 min., 15 min., 30 min., 60min. and 120 min.

Listen to Music

■ **Play/Stop/Pause**

In Music Play menu, connect the earphone with player, select the desired song file by pushing **PRE** or **NEXT** key, short press "MENU" key to begin the playing, then short press **▶** key to pause, operate it circularly. During the playing of music, the interface has real audio frequency display.

The player only supports the Lyric Synchronous Display that the file shares the same name as LRC file of MP3 format, e.g., music file is named as "Angel.mp3", the LRC file must be named as "Angel.lrc", what's more, they have to be in the same directory.

■ **Music Play Setting Menu**

In Music Play state, long press **MENU** key to return Main Menu and enter the "Music" in "Settings" option, there are multi options, push **PRE** or **NEXT** key to shift to the desired setup menu. After your selection, press **MENU** key to confirm.

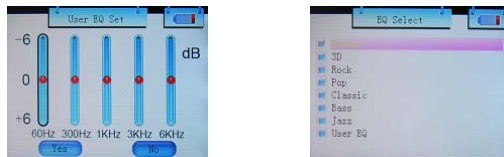
Reread mode

In the music mode, when you short press VOL key, the volume value at the bottom right of the screen becomes red and starts flashing. When you short press "MENU" again, A- appears at the bottom left of the screen, which means the player goes into reread mode. Short press "MENU" key again to set the end point B. In this case, the player starts playing the music between A and B.

1. Repeat Mode
 - a. Once Stop after playing all the songs in each directory
 - b. Repeat 1 Repeat playing a single song.
 - c. Folder once Play all the songs in the folder.
 - d. Folder repeat repeatedly play all the songs in the folder.
 - e. All once Play randomly the songs in the current folder.
 - f. All repeat Repeatedly play all the songs.
 - g. Intro Play all the songs of the first 10 seconds in the current folder.

2. EQ Setup

Normal/3D/Rock/Pop/Classic/bass/Jazz/User EQ, the above eight options will bring you different music effects; also, you can edit your favorite EQ effect by [User EQ set] option. The operation is done by leftwards, rightwards, ""MENU keys.



3. play mode

order
shuffle

■ Video playing

While under the video playing menu, press "⏏" to stop the video playing, long press "MENU" to exit, long press "PRE" to fastward playing, long press "NEXT" to backward playing.



press "MENU" to retrun to the file list , then press VOL to enter the browse, there are flash memory and TF card directors ,you can press PRE or NEXT to select

Camera

Camera

In the main menu, press "⏏" to select "Camera" option, and press "MENU" key to enable the camera function. Two options are available: DV and DC. Press "⏏" to select your desire option and press MENU to make confirmation.



If the DC function is selected, a tool bar appears on the top of the screen. Short press MENU key to switch the tools: 1: image zoom-in and zoom-out; 2:

available options: normal, moon, sun, fast, timer; 3: image size: 320*240, 640*480, 800*600, 1024*768, 1280*1024. 4: brightness adjustment; 5: color adjustment; 6: contrast adjustment; 7: background options: normal, negative, brown, reminisce, blue, e and m; 8: available options: economy, normal, fine, sfine. All of the above functions are adjusted by means of **◀◀/▶▶** key.

After the photo effect is well adjusted, press "Take a photo" key to start shooting. (Note that you don't shake in the shooting process to make sure the effect of the photo)

View photo

In the main menu, press **◀◀/▶▶** to select "View photo" option, and press "MENU" key. Press **◀◀/▶▶** key to select DC file. Press MENU key to make confirmation. Select your desire photo file. For details, see the photo view function.

Shoot DV



If the DV function is selected, press MENU to go to the shooting status, and press "Take a photo" key. In this case, a small dot appears on the top left corner of the screen, which means the shooting operation starts. After the shooting operation, long press MENU to save the file,

Play DV

In the main menu, press **◀◀/▶▶** key to select "Movie" option, and short press MENU key to enter the file management menu. Press **◀◀/▶▶** key to select DV folder. Press MENU again to start playing.

Voice REC

■ Voice REC
In Main Interface, enter Record state, press PLAY key to start/pause recording, Long press [MENU] key to save the record and exit the REC mode.

- REC Setup
In Stop state of REC mode, long press [MENU] key to exit the Main interface, and enter [Record] option, adjust the settings among [REC Quality]/[REC Volume].
1. REC Quality: high quality, common quality (the first one has larger REC file and better effect; the second one is in the opposite)
 2. REC Volume: five options of +1, +2, +3, +4 and +5. The higher level, the larger recorded volume.

*The recorded voice files can be found in Music Play menu and played to try the effect.
*If the screen displays "Full Space", it indicates that there is no space for new recorded file, please delete other files to release more space.

Resources Manager

■ Resources Manager
Resources manager is one of the function characteristics, it can make you know the inside file type, structure and contents more clearly, for convenient management and search of the file content in classifications .

■ Delete File
In Resources Manager, you can select music or video files, long press "PLAY" key to display delete Dialog box, select "Yes" to delete and "No" to cancel. After the selection, short press "MENU" key to implement the

selected option.

Picture Browse

■ JPEG Browser

In Main Interface, short press **MENU** key to confirm to enter Picture Browse mode
Push **PRE** or **NEXT** key to select the previous or next picture.

FM Tuner

Enter FM menu, Press **MENU** key to select: Manu, Auto, Mem, Pres, Del

Manu: Press "**MENU**" Key to confirm, press **PRE** or **NEXT** to change the frequent manually, long press "**MENU**" to exit.

Auto: Press "**MENU**" to enter, the player will automatically search,, Press **PRE** or **NEXT** to select the station.

Mem: press "**MENU**" key to enter, press **PRE** or **NEXT** to select the stations, press "**MENU**" to confirm store, the frequent display on screen will replace the frequent that stored before. First Short press **MENU** to exit mem, then long press **MENU** to return FM menu.

Del: press "**MENU**" key to enter, press **PRE** or **NEXT** to select the station that you want to delete, press "**MENU**" the confirm, after delete the station's frequent will display "empty", First Short press **MENU** to exit del, then long press **MENU** to return FM menu.

FM record :

When you listen the FM music, short press "**PLAY**" key , then press **PLAY** key to record and pause selecting, long press **MENU** key to store the Music as file and exit FM record mode.

Note:

In FM mode, the earphone is using as antenna, so please keeping the earphone is connected well.

E-Book

■ Download TXT File

Connect the player to computer, select the desired file to download and save the file as TXT format in portable disk.

■ Read File

In Main Interface, enter Text option, push **PRE** or **NEXT** key to select the desired file to read, then short press **MENU** key to read. Turn pages by pushing **PRE** or **NEXT** key.

MiniSD (TF) Card function

While under the music/video/ebook menu, press "**MENU**" to retrun to the filelist , then press **VOL** to enter the brower, there are flash memory and MiniSD card directors ,you can press **PRE** or **NEXT** to select .

USB Disk

■ USB Display Mode

The player has a high-speed USB2.0 port with the transmission speed of 5M/S, and is a standard USB disk, supports the systems including Windows98 (it needs to install the driver), over Windows2K (it's unnecessary to install the driver), Mac OS 10.3 and over, Linux Redhat 8.0 and over. It supports USB power supply and can be played without battery. After connecting to the PC (several seconds later).

■ Charge Display Mode

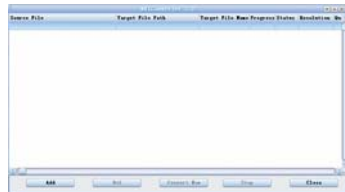
If the battery is too low, the display will shows "Low battery to power off", then the player will be powered off automatically. You can use the attached charger to charge the battery. During the charging, the battery icon will display the impulse, after the charging, the battery electricity will shows full grids (Fig.). It requires 3 hours to charge fully the battery (note: for the first two times, you have to charge for 8 hours).



Convert and Play Video File

This player can convert the WMV, RM, AVI, VOB or DAT into AVI video format via the attached video convert software.

1.Click and run the program of "AV Converter.exe", shown as follows:



2.click "add ", show dialog as follows:



Convert and Play Video File

3. Select and set your desired parameters, select your desired video/audio file and AVI video file routine to be generated, click [Start to Convert] button, then begin to convert to AVI file.



3. The successfully converted AVI video file can be played in MP4 player. During he operation, enter Video Play menu, select the corresponding file, short press [MODE] key to play in video, long press to exit (the Video Play interface refers to the Screen Description).

Troubleshooting

If the player can not be played normally, please check as follows:

Troubles	Causes
It cannot be turned on	Check whether the player is powered on or not and whether the machine program is damaged or not
The player is blocked	Push the power switch to restart the player
It can not be played	Check whether the machine is powered on or not Confirm the volume is not in "0" level, check the earphone is connected well and keep the earphone clean Format the disk again
It can not upload/download the file or the disk can not be found in computer	Insert USB cable totally well after the Power on. Correctly install the driver again.
It can not be recorded	Check the enough memory and the electricity
Words on display are deformed	Make sure that you have selected the correct language
It can not be used normally after upgrading	Upgrade again in Windows 2000

Specifications

Dimensions	82mm×51mm×11mm (L×W×H)
Weight	46g
Computer Connection	Hi-speed USB2.0 (HS)Flash disk!
Screen	2.4" TFT screen
Power Supply	Built-in 3.7V Li battery
Memory	Flash memory: 256MB-4GB
Tf Card Memory	Tf Card Memory:256MB-2GB
Music Format	Support MP1,MP2,MP3, WMA, WAV,
MP3 Bit Rate	8Kbps -320Kbps, 8KHz-48KHz
WMA Bit Rate	22Kbps-192Kbps, 8KHz-48KHz
SNR	85DB
Lyric	Support LRC lyric display
Video Format	AVI
Support Converted Video Format	Avi, asf, wmv, MPEG1、MPEG2、MPEG4、rm、mov
Video Frame Rate	Low, Middle, High
Image Format	Support JPG , BMP format
DC function	1300 thousand Pixels 1280*1024(option)
DV function	Supports Pixels:320*240 frame/second 、 Supports file format: MP4
E-book Format	Support TXT format
Record Format	Support WAV(32K bps), ACT(8K bps)
FM	Support 76MHZ-108.00MHz, support FM record
Stored Channels	20+20
Earphone Output Power	(L)10Mw+(R)10mW(32Ohm), built-in speaker
Output Frequency Range	20Hz~20KHz
Radio SNR	45DB
Language	English, Spanish, Dutch, French, German, Italian, Portuguese
Working Temperature	0 -40℃
System Requirements	Support Windows98/SE/ME/2K/XP, Mac OS 10 No need to install driver for WIN2K and above

The information included in this manual is subject to change without prior notice.