

# Windows XP Driver Installation of Net'sGo Android Tablet

## Description:

The Net'sGo Android Tablet (abbreviated as Net'sGo) can be connected to a PC that runs Windows 7 or XP through a USB cabling in order to copy files in both directions. Normally Windows 7 will recognize Net'sGo as a mass removable device and install related drivers automatically. However, Windows XP does NOT. Therefore, the Net'sGo drivers are needed to be installed on the Windows XP in order to allow the PC to recognize Net'sGo.

## Required Environment:

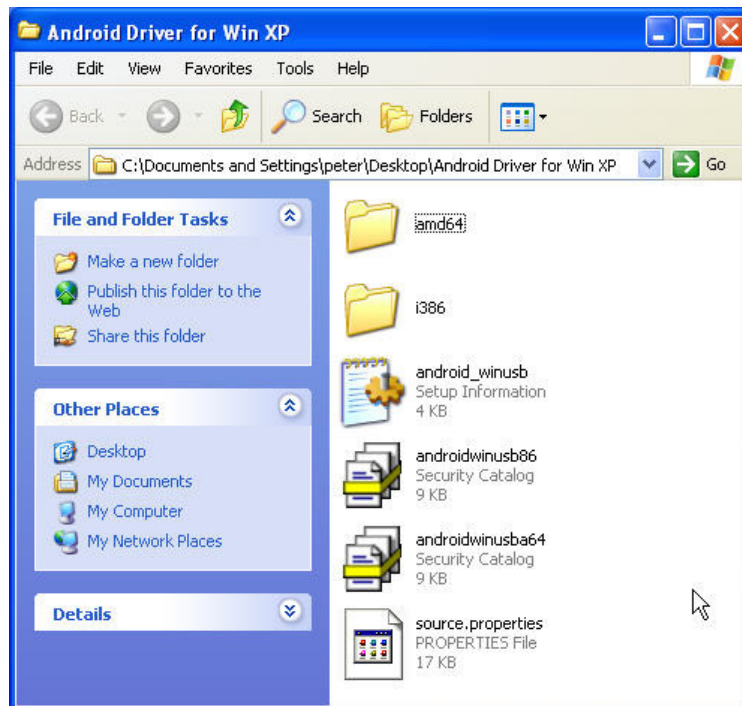
1. The Net'sGo Android Tablet with a USB Cable
2. One PC or Laptop running Windows XP
3. Windows XP Drivers for Net'sGo

## Steps on How to Do it:

### Step1:

Copy the Folder that Contains the Drivers for Net'sGo into Windows XP's Desktop

The driver folder contains the files as follows:

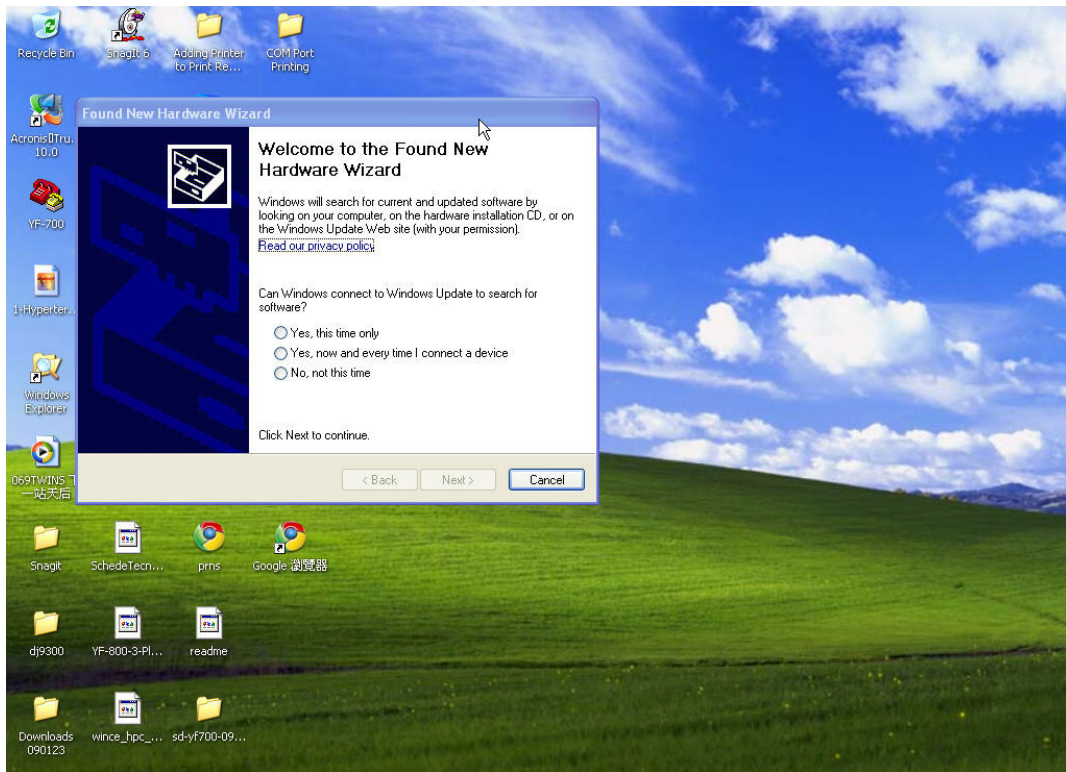


### Step2:

Connect Net'sGo and PC by plugging two ends of a USB cable to the USB ports of PC and Net'sGo respectively. Note that you must plug the USB to the USB client port of Net'sGo (This USB client port is the one which is next to the DC charger hole).

### Step3:

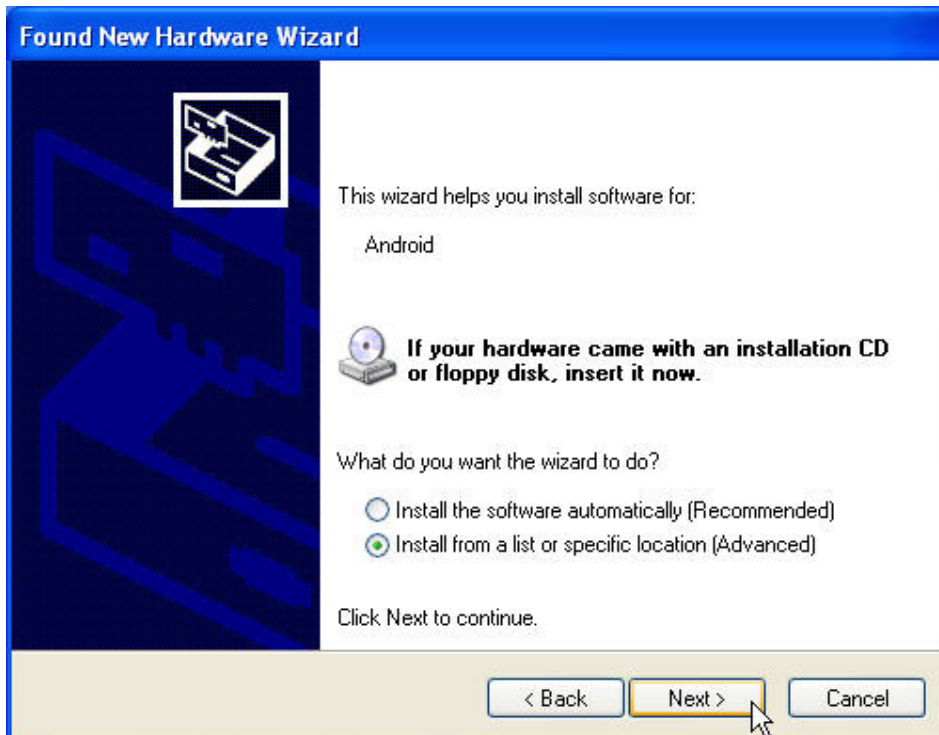
On the Windows XP Desktop, the system will detect a new device once the Net'sGo is connected to the PC. Then a "Found New Hardware Wizard" will pop up to prompt for next action:



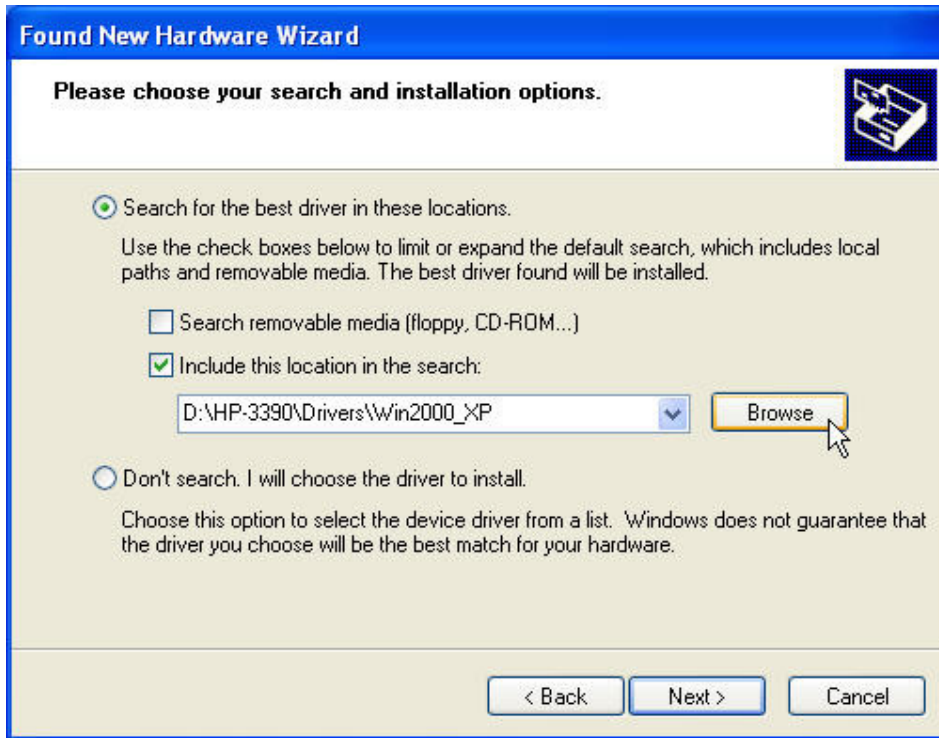
Select the first option and press “Next”:



Select “Install from a list or specific location (Advanced)” and press “Next”:



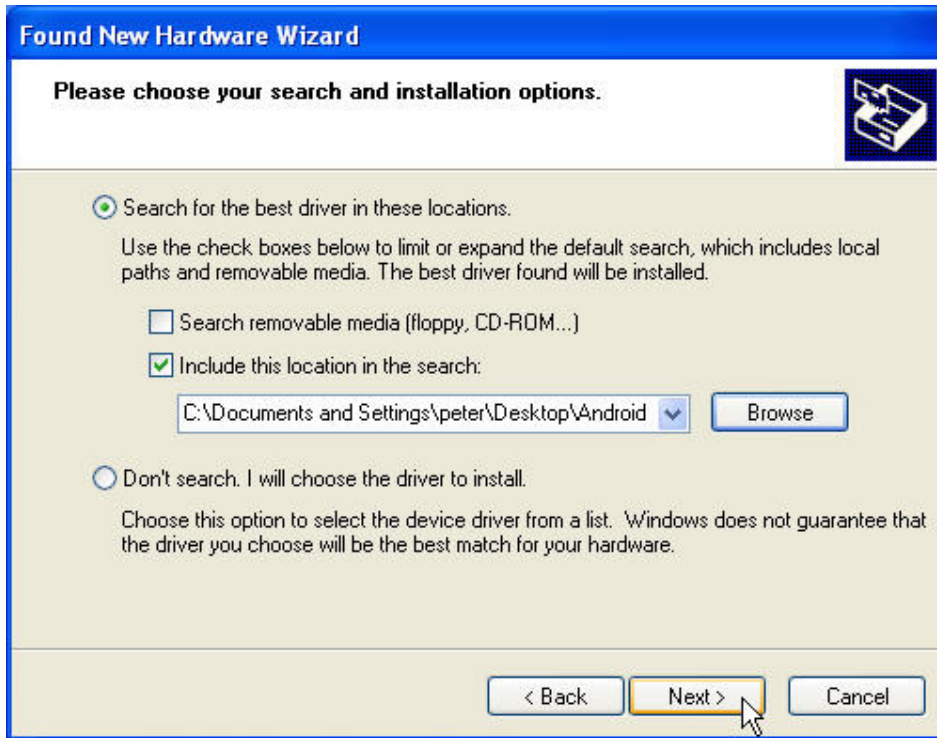
Select the option “Search for the best driver in these location...” and “Include this location...” and press “Browse” to look for the Driver folder on the Windows XP Desktop:



Select the Driver folder:



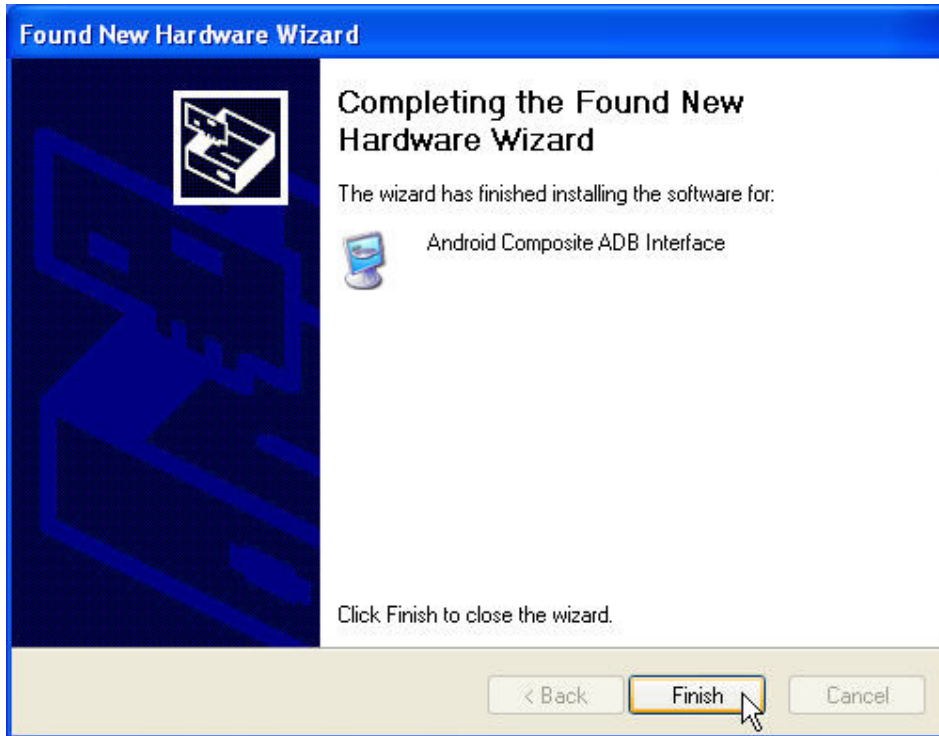
Press "Next" to proceed:



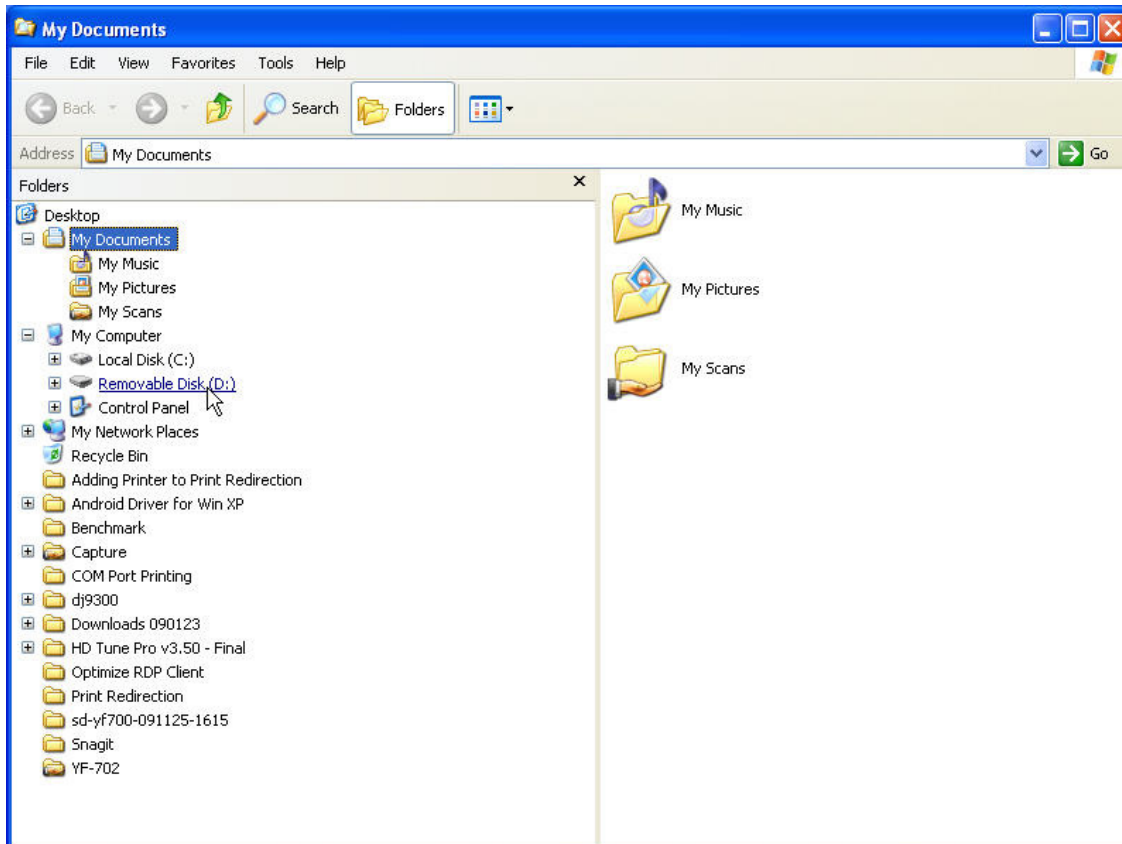
Start copying and installing drivers into Windows XP:



Press "Finish" after the "Found New Hardware Wizard" is completed:

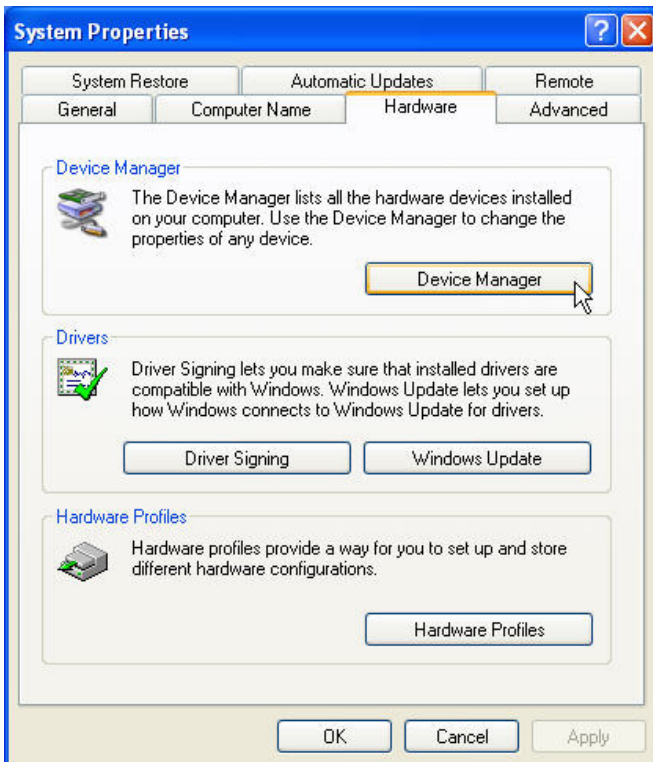


The Net'sGo will appear as a "Removable Disk" in the File Manager of Windows XP:



## Trouble Shooting:

To ensure the driver is installed successfully, please check here:



Make sure this device appears as “Android File-Stor....”.

