

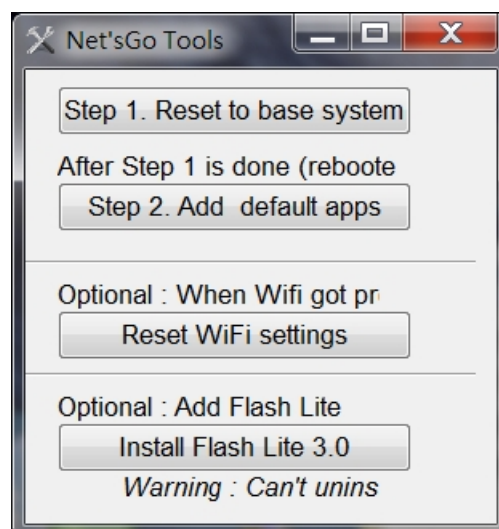
# Net'sGo Rescuer

## To save from Apps crashed

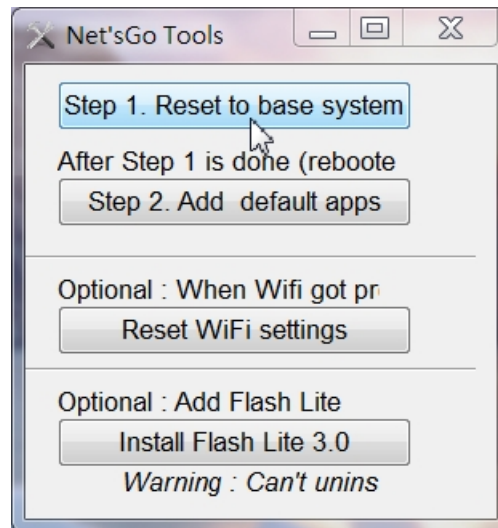
How to Reset Your Net'sGo back to Factory Default (i.e. the state when you first open up the Net'sGo from gift box):

1. Power on Net'sGo
2. Plug both ends of a USB cable to both PC and Net'sGo (the USB Client connector) and allow Net'sGo being recognized by your PC (with Windows XP or 7)
3. Launch Rescuer by double clicking "Rescuer" under the "Rescuer" folder.

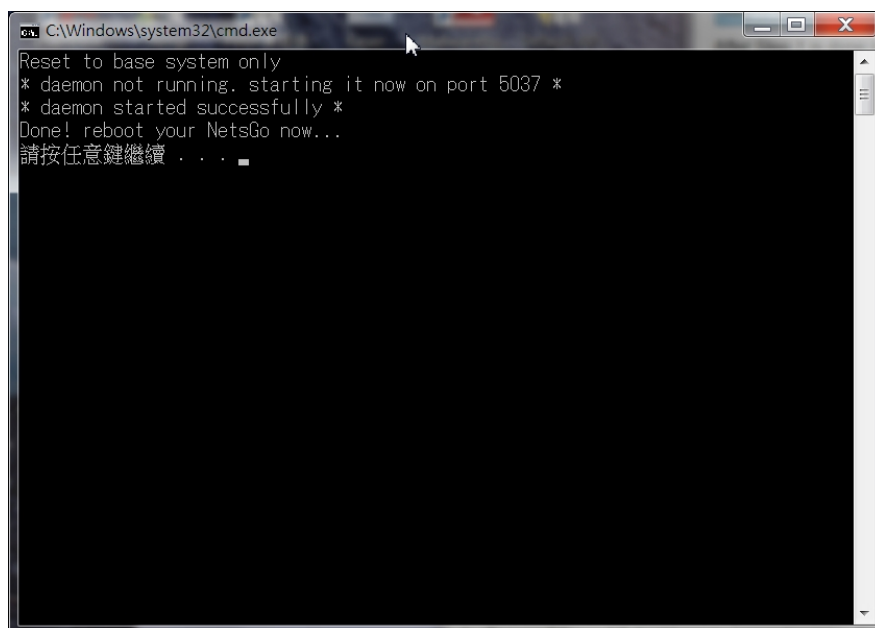
名稱	修改日期	類型	大小
apk	2010/12/30 上午 ...	檔案資料夾	
dependlib	2010/12/30 上午 ...	檔案資料夾	
Drivers	2010/12/30 上午 ...	檔案資料夾	
lib	2010/12/30 上午 ...	檔案資料夾	
system32	2010/12/30 上午 ...	檔案資料夾	
adb	2010/12/24 上午 ...	應用程式	401 KB
AdbWinApi.dll	2010/12/24 上午 ...	應用程式擴充	94 KB
AdbWinUsbApi.dll	2010/12/24 上午 ...	應用程式擴充	60 KB
NetsGoTools	2010/12/30 下午 ...	應用程式	154 KB



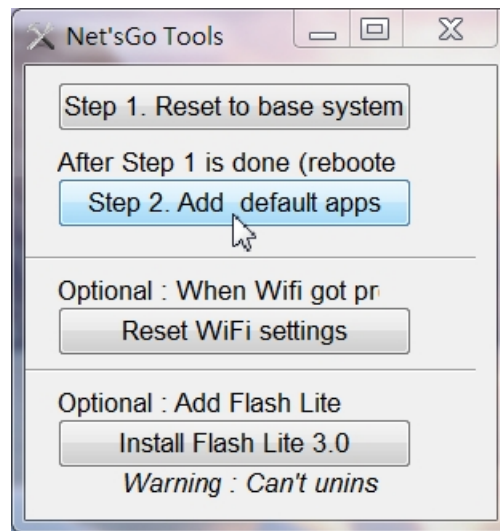
4. Press "Step1" button to reset your Net'sGo to base system (the clean system without Application software installed):
- A Text Screen will appear after pressing Step1 to show the status of resetting to base system.



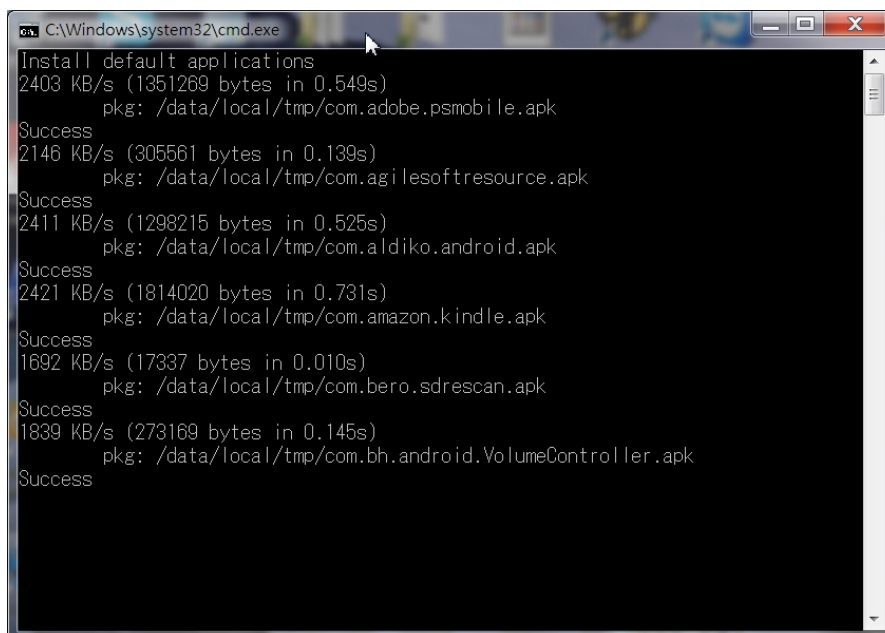
- Wait until your Net'sGo reboot to the Top Screen (Desktop)
- Proceed to Step2 if you want to install the Application software that comes with the Net'sGo as factory default.
- Press any key on the keyboard of your PC to complete Step1.



5. Press "Step2" button to add the factory pre-installed application software:
- A Text Screen will appear to show the status of adding the application software.



- The screen will keep scrolling while the addition of application software is in progress.
- The scrolling will stop and shows the message: **"Done!, Press Any Keys to Continue ..."**.
- Press any key on the keyboard of your PC to complete Step2.



## Optional Settings: (This is not necessary unless you wish to do it)

### 1. Reset WiFi settings:

Press this button to reset the WiFi setting of your Net'sGo.

(This is useful when your Net'sGo's WiFi settings is stucked for unknown reasons)



### 2. Install Flash Lite 3.0:

Press this button to install Flash Lite 3.0 to the Browser of your Net'sGo.

#### Notes:

- This will allow your browser to view some Web sites that are designed using simple Flash.
- This does not allow your Browser to view all Web sites that are designed using Flash 10.
- The installation of Flash Lite will slow down your Web surfing experience.
- Once Flash Lite is installed, it can NOT be uninstalled from your Net'sGo.



## Appendix A: How to Install Rescuer

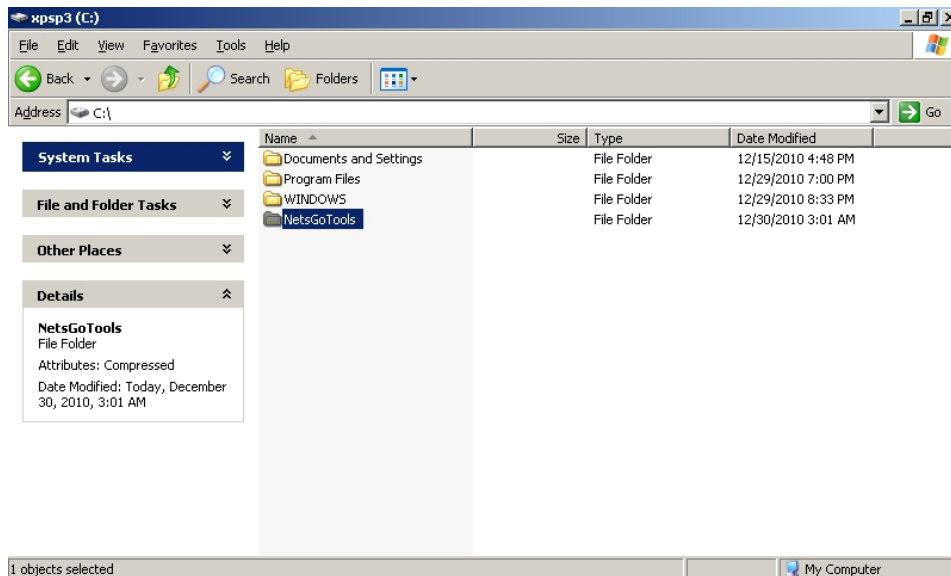
1. Download the compressed file: Rescuer.zip from [https://www.sugarsync.com/pf/D691617\\_6016929\\_687602](https://www.sugarsync.com/pf/D691617_6016929_687602)
2. Decompress “Rescuer.zip” to the root of C: drive on your PC (Your PC must be Windows XP or 7)
3. All the files and folders will appear as the following after decompressing the Rescuer.zip:

名稱	修改日期	類型	大小
apk	2010/12/30 上午 ...	檔案資料夾	
dependlib	2010/12/30 上午 ...	檔案資料夾	
Drivers	2010/12/30 上午 ...	檔案資料夾	
lib	2010/12/30 上午 ...	檔案資料夾	
system32	2010/12/30 上午 ...	檔案資料夾	
adb	2010/12/24 上午 ...	應用程式	401 KB
AdbWinApi.dll	2010/12/24 上午 ...	應用程式擴充	94 KB
AdbWinUsbApi.dll	2010/12/24 上午 ...	應用程式擴充	60 KB
NetsGoTools	2010/12/30 下午 ...	應用程式	154 KB

## Appendix B: How to Install Net'sGo Driver to Your Windows System

You need to install Net'sGo driver if your Windows System could not recognize Net'sGo when it is connected to your PC through the USB interface.

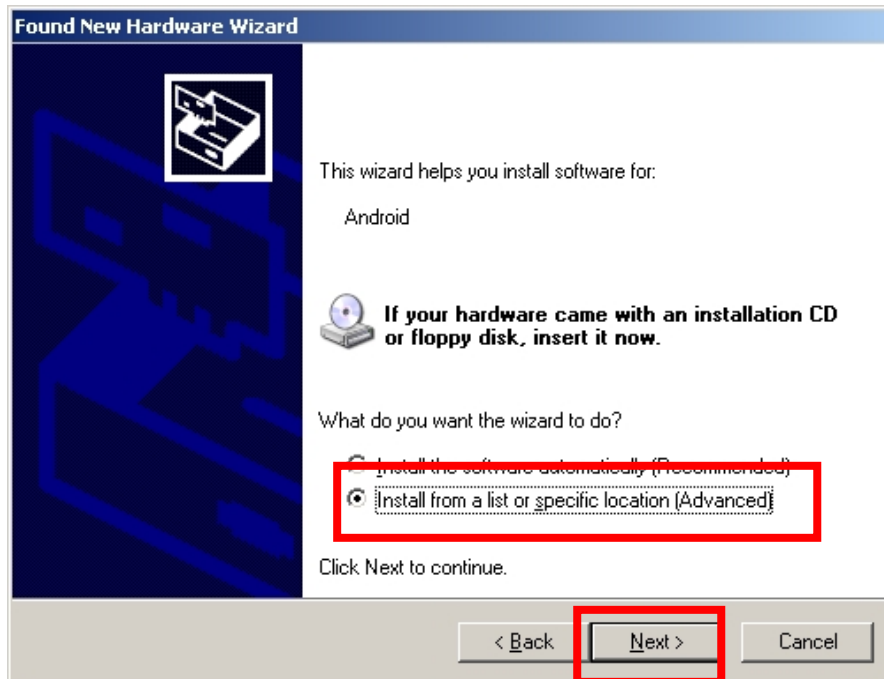
All related Net'sGo drivers are located under the "Driver" folder of Rescuer:



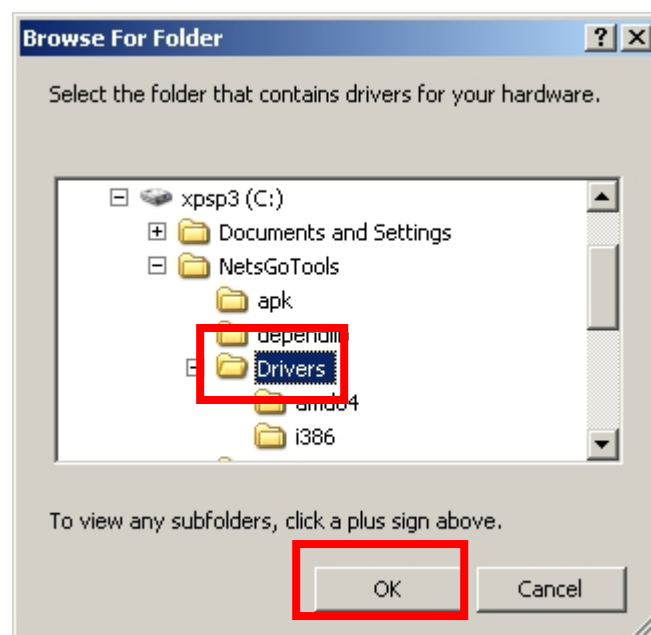
Your Windows will pop-up a dialogue if it does not recognize Net'sGo when plugged in:

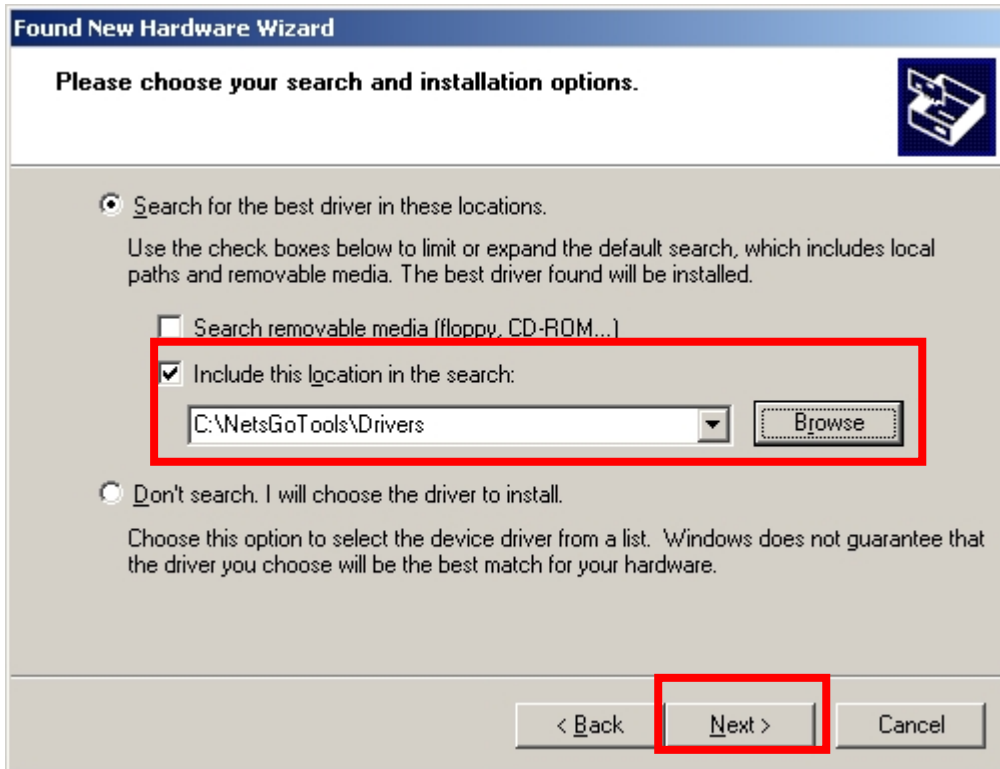


Press "Next" to proceed to find the driver location:

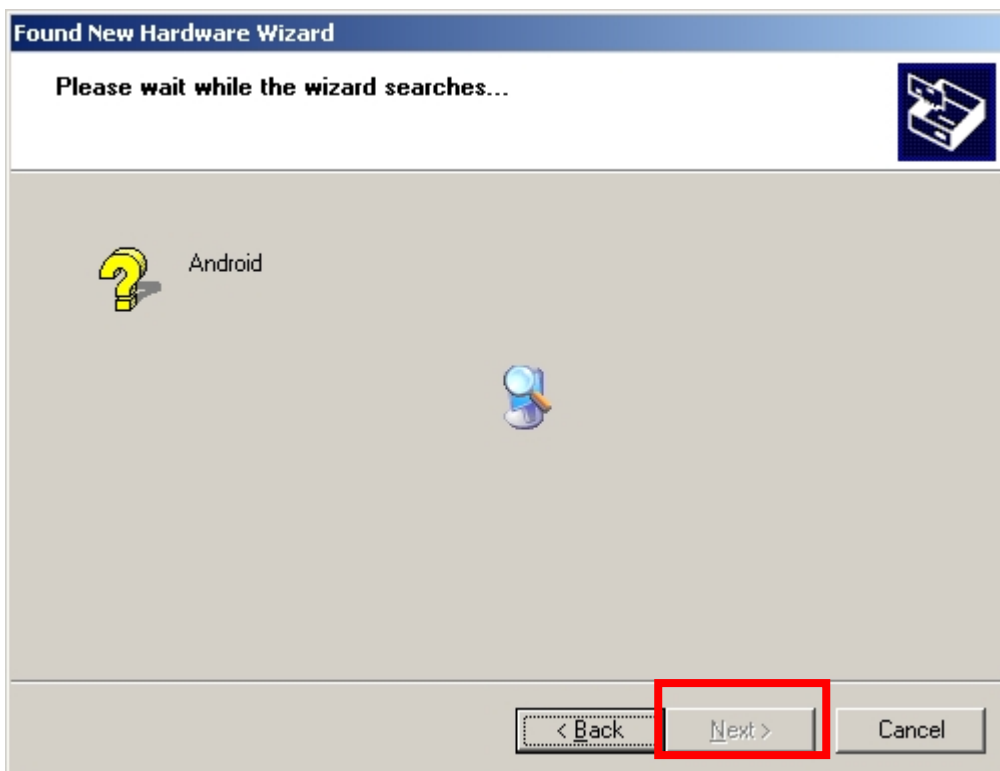


Navigate through the Driver location under NetsGoTool:

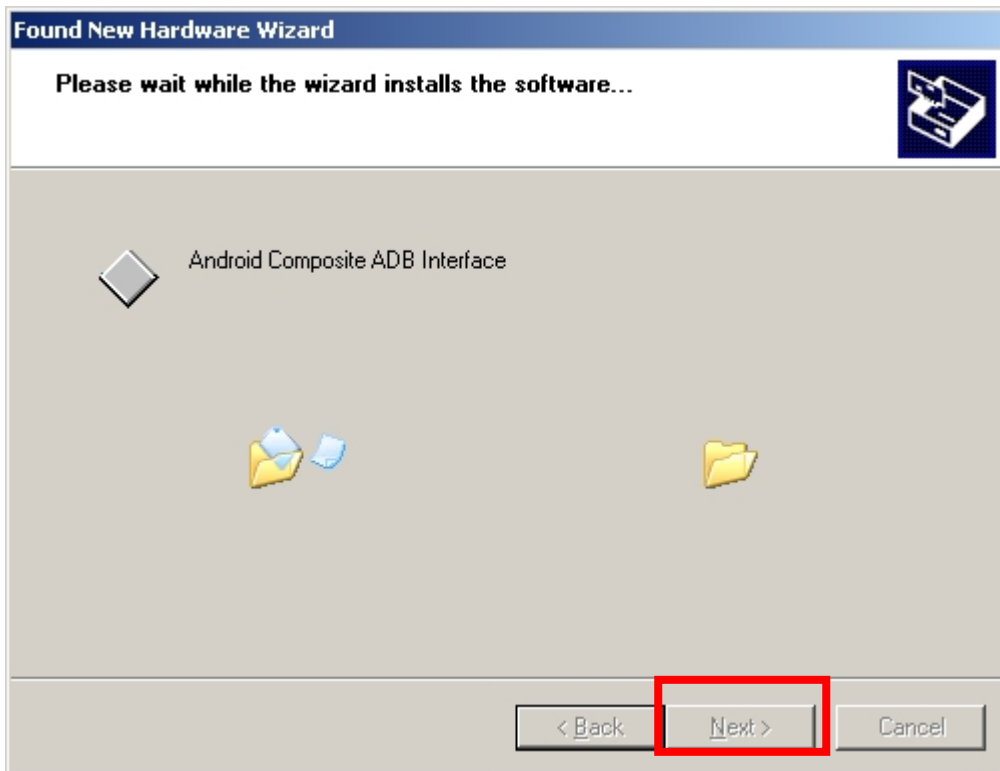




Wait for Wizard to look for the right Drivers for your Windows:



Wait while the Wizard is installing the Drivers and press "Next" to start installation:



Press "Finish" to complete the Driver Installation:

